

Roads Australia Industry Luncheon

Reece Waldock
Director General - Transport



Department of
Transport



mainroads
WESTERN AUSTRALIA



Public Transport
Authority

State budget 2014/15

Asset Investment Program

	2012/13 Actual	2014/15 Budget	2015/16 Estimate	2016/17 Estimate	2017/18 Estimate	4 year total
	\$M	\$M	\$M	\$M	\$M	\$M
Main Roads WA	829.1	883.0	639.0	847.6	1,001.1	3,370.7
Public Transport Authority	518.8	424.5	385.3	365.8	694.0	1,869.6
Total	1,347.9	1,307.5	1,024.3	1,213.4	1,695.1	5,240.3

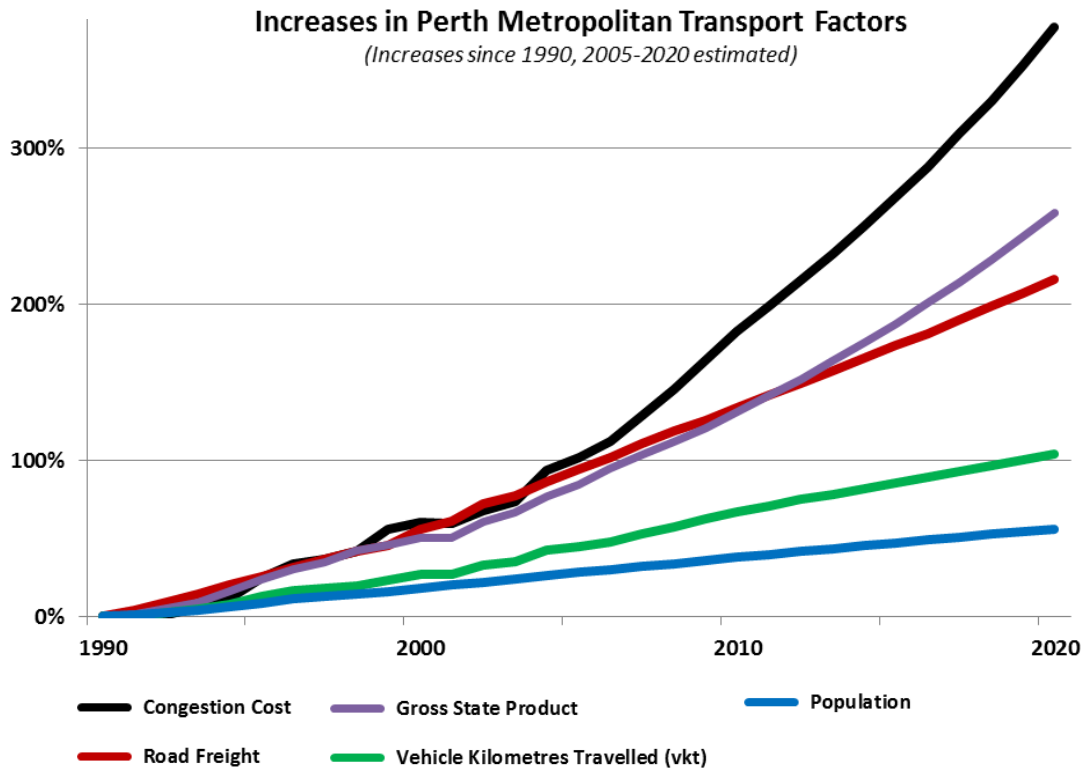
\$1.6 billion Perth Freight Link not included in forward program

Employment figures for major projects

Project	Transport				
	Capital Budget (\$M)	Peak Workforce	Total workforce over full duration	Peak: \$M ratio	Total: \$M ratio
Forrestfield-Airport Link	2,021.0	800	2,000	0.40	0.99
Gateway WA	1,000.0	950	7,000	0.95	7.00
Northlink	1,050.0	544	7,700	0.95	7.00
Perth Freight Link	1,570.0	1,300	9,000	0.82	5.73
Perth City Link – Rail and Bus Station works	569.3	420	3,100	0.74	5.44

Traffic Congestion

The cost

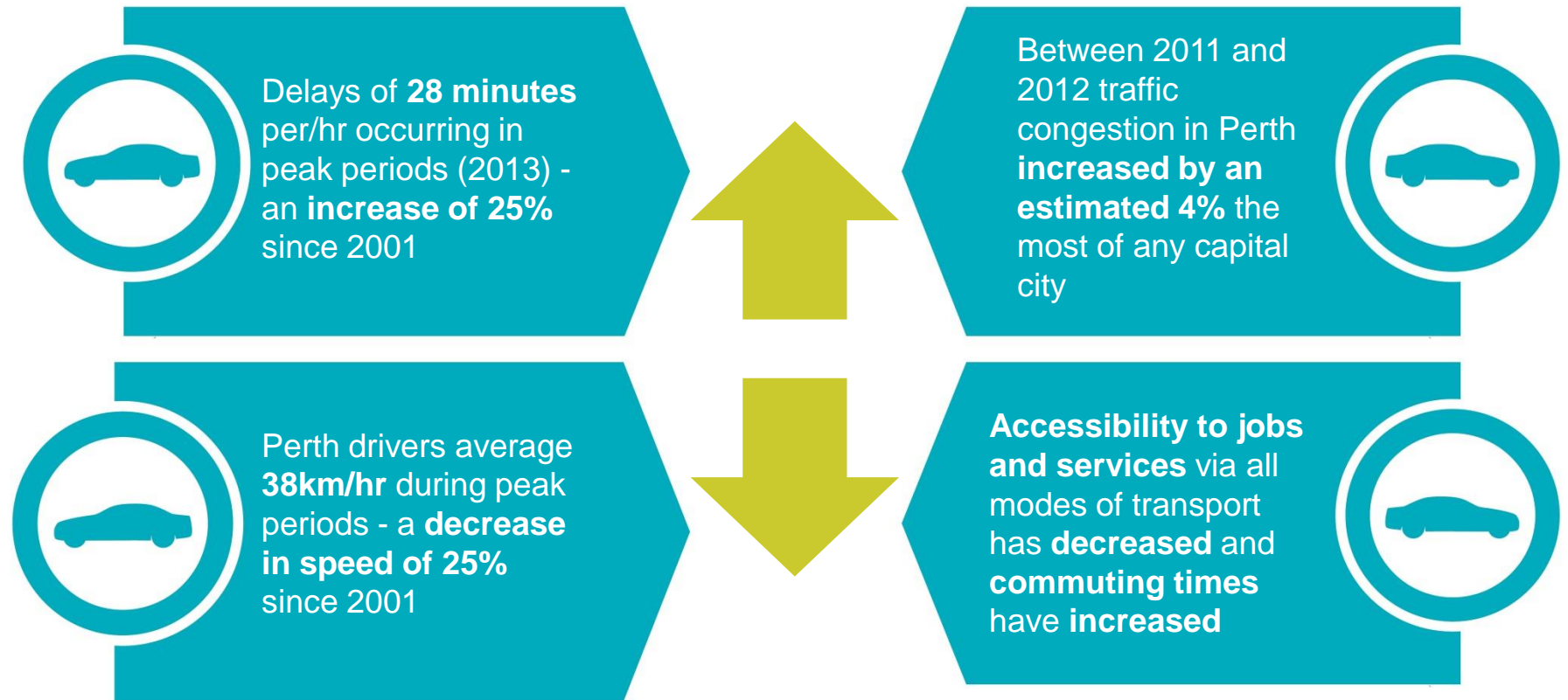


A **1% increase in travel** results in a **2.7% increase in congestion cost**, worth around \$40 million per year

The estimated cost of congestion to the WA economy will rise to **\$2.1 billion** by the end of **2020**

Traffic Congestion

The impacts



Many households on Perth's fringes can access:

- as few as **20%** of jobs in a **one hour car journey**; and
- **less than 5%** of jobs in a **one hour public transport journey**

Traffic Congestion

The impacts

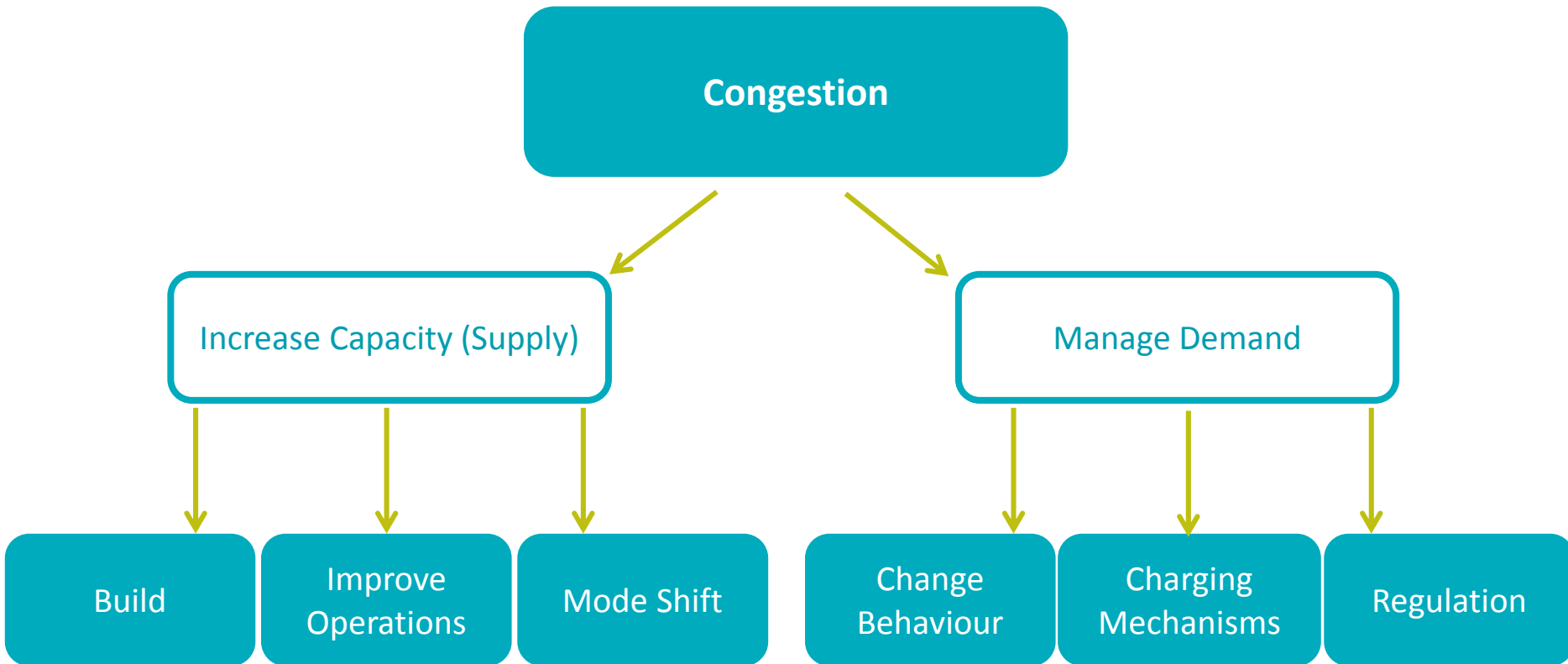


Increased congestion has resulted in the morning peak on the freeways starting at 5.45am, compared to 7.00am in 2008

Traffic volumes AM Peak (6-10am on an average weekday)		Nov 2012 AM Peak	Nov 2013 AM Peak	Nov 2014 AM Peak
Kwinana Freeway	NB	26,520	26,550	27,710
	SB	21,090	22,110	22,770
Graham Farmer Freeway	EB	12,550	14,010	14,130
	WB	13,430	15,430	15,570



Managing demand and supply



Cars | Trucks | Walking | Cycling | Motorcycles | Public Transport | Taxis



Traffic Congestion Management Program

What is it?

- Developed in August 2013
- Provides a coordinated, proactive approach to congestion management
- Aims to maximise capacity, improve performance and enable road users to make informed decisions about their travel
- Data led, identifying congestion “hot spots” on the road network that will require treatments, to cater for current and future demand



Traffic Congestion Management Program

Areas of focus

**Planning and
Evaluation**

1

**Arterial Road
Optimisation**

2

**Freeway
Optimisation**

3

**CBD Traffic
Management**

4

**Public
Transport**

5

**Traveller
Information**

6

**Demand
Management**

7

**Network
Expansion**

8



Funded projects

As at February 2015

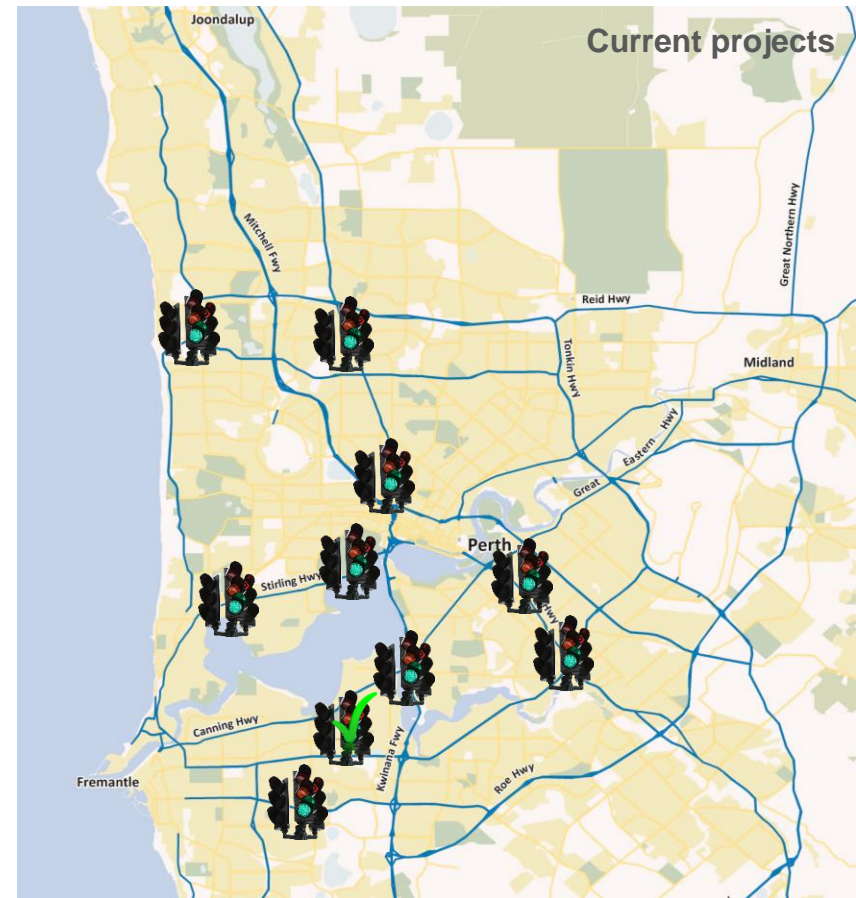
- Traffic Signal Optimisation Program
- Freeway Off-Ramp Improvements
- CCTV Arterial Network Expansion 2014/15
- Foundation ITS Orrong Rd and Leach Hwy
- CBD Parallel Walks, Incident Response and Clearway Towing
- Additional Strategic VMS 2014/15
- PSP Upgrade Program
- Dedicated left turn lane on Mitchell Fwy from Erindale Rd to Reid Hwy
- Road Space booking system
- Network performance data – Tom Tom
- Performance Lead Innovation at Traffic Signal trials (PCaTS and PLIaTS)



Traffic Signal Optimisation Program

- Optimise 93 traffic signals sites on nine sections of six corridors
- Improve around 289,000 journeys per day over 58 km of arterial roads


Current projects	Future program
Leach Highway Stage 1 	The 2015/16 program will optimise 200 traffic signals sites
Canning Highway Stage 2	
Marmion Avenue Stage 1	Beyond 2015/16, our ambition is to review 400 sites every year
Charles Street	
South Street	
Stirling Highway; - Claremont Quarter - John Street to Mounts Bay Road	
Wanneroo Road Stage 1	
Shepperton Road	
Albany Highway	



Off-ramps

Freeway optimisation

Description: Excess queuing on off-ramps in the peak periods result in vehicles using the emergency lanes as a de facto extension to the running lanes and queuing on through freeway lanes

Location	Status	Dates
GFF/East Pde westbound	Design complete 	On hold
Roe Hwy/Orrong Rd northbound	Additional design work needed	April 2015
Roe Hwy/Nicholson Rd westbound	Drainage works complete	Resurfacing by March 2015
Roe Hwy / Willeri Drv eastbound	Drainage works complete	Resurfacing by March 2015
Roe Hwy / Willeri Drv westbound	Drainage works complete	Resurfacing by March 2015



Dedicated left turn lanes

Freeway optimisation

Outcome: Merge lane locations on the Freeway network can cause traffic flow breakdown and major congestion – reduce driver frustration and illegal behaviours by adopting modified design standard through using a dedicated left turn lane

Location	Status	Dates
Mitchell Fwy northbound (Erindale Rd to Reid Hwy)	Design	Construction completed March 2016
Mitchell Fwy northbound (Cedric St to Karrinyup Rd)	Development	Construction completed Nov 2016
Kwinana Fwy Southbound (Judd St to Canning Hwy)	Development	Construction completed Dec 2017

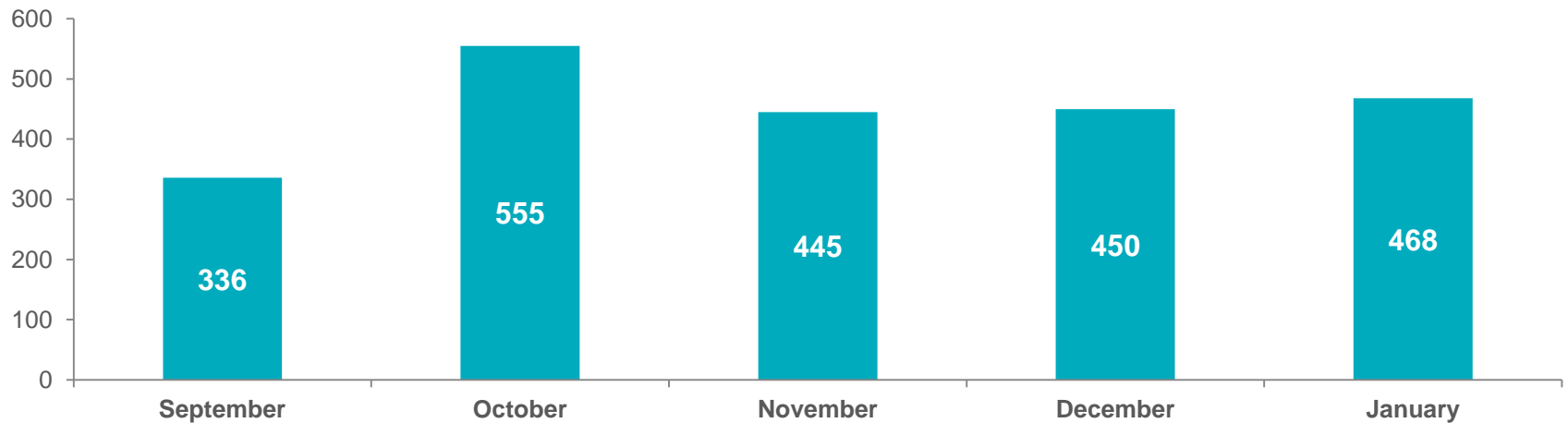
Clearway management

CBD Traffic

From its launch on 8 September 2014 to 31 December 2014:

- 1,755 cars have been removed
- 3,034 infringement notices issued by the City of Perth for blocking clearways
- a reduction of almost 30 per cent on the same period in 2013

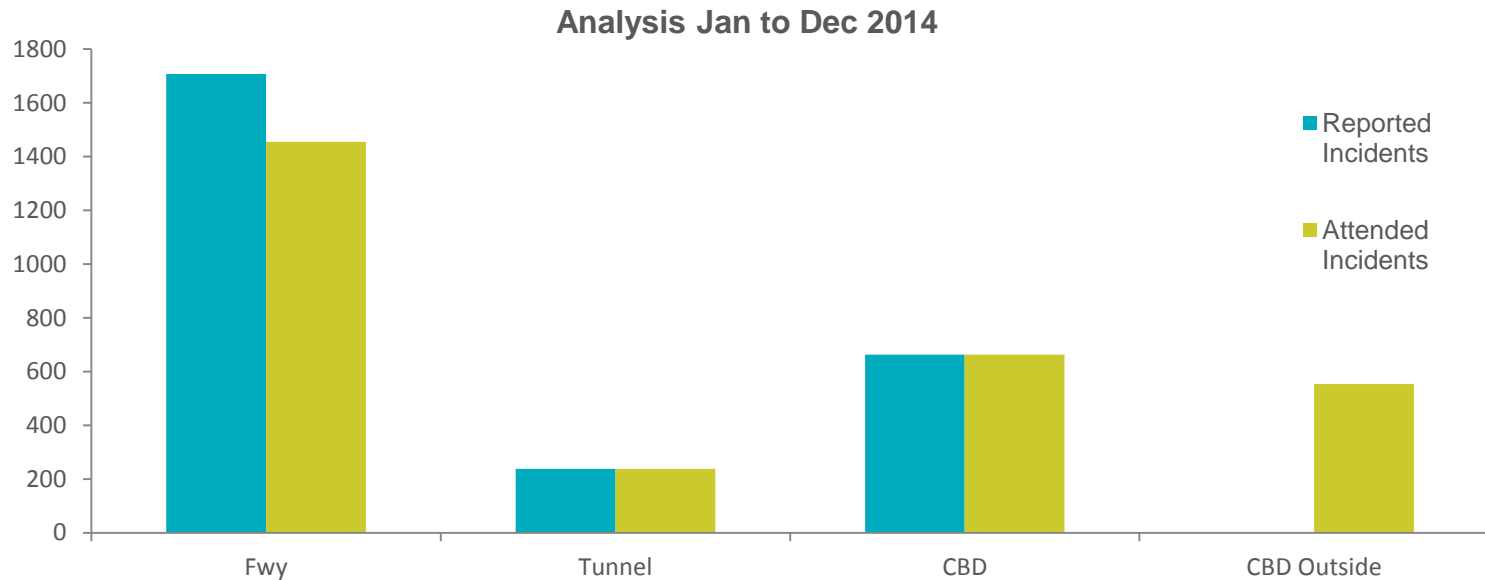
Cars towed per month



Incident Response Service

CBD Traffic

- November 2012
 - one dedicated vehicle servicing the Northbridge Tunnel and Graham Farmer Freeway between Loftus Street and the western abutment of the Windan Bridge
- May 2013
 - three hire vehicles monitoring the Perth CBD and Mitchell Freeway to Reid Highway and south on the Kwinana Freeway to Roe Highway

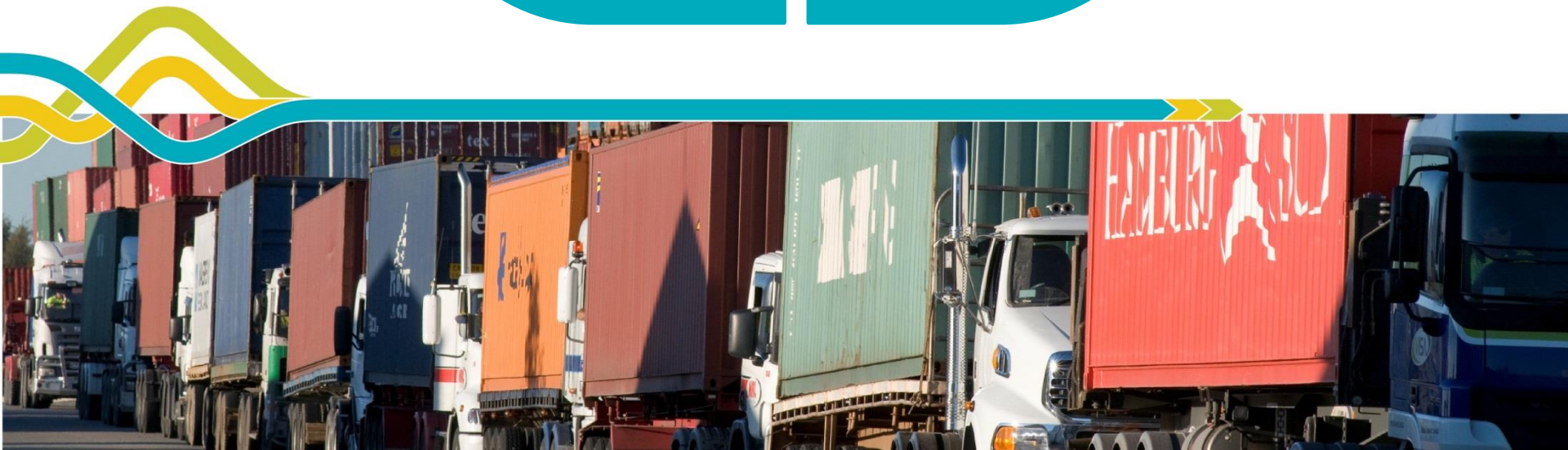


Freight

- Complimentary plans that together form the long-term freight infrastructure blueprint for the development of the State's freight roads, freight rail lines and port authorities

Regional Freight
Transport
Network Plan
Released May 2013

Perth Freight
Transport
Network Plan
With Government for
consideration



Five priorities for action

Perth Freight Transport Network Plan

- 1 A generational step-up in metropolitan port capacity
 - 2 Moving more of Perth's freight task by rail
 - 3 Expanding the Metropolitan Intermodal Terminal System
 - 4 A high-standard, high-productivity road freight network to strengthen the economy
 - 5 Locking in measures to protect Transport infrastructure critical to economic prosperity
- 

Investing in freight infrastructure

Linking the city to the regions



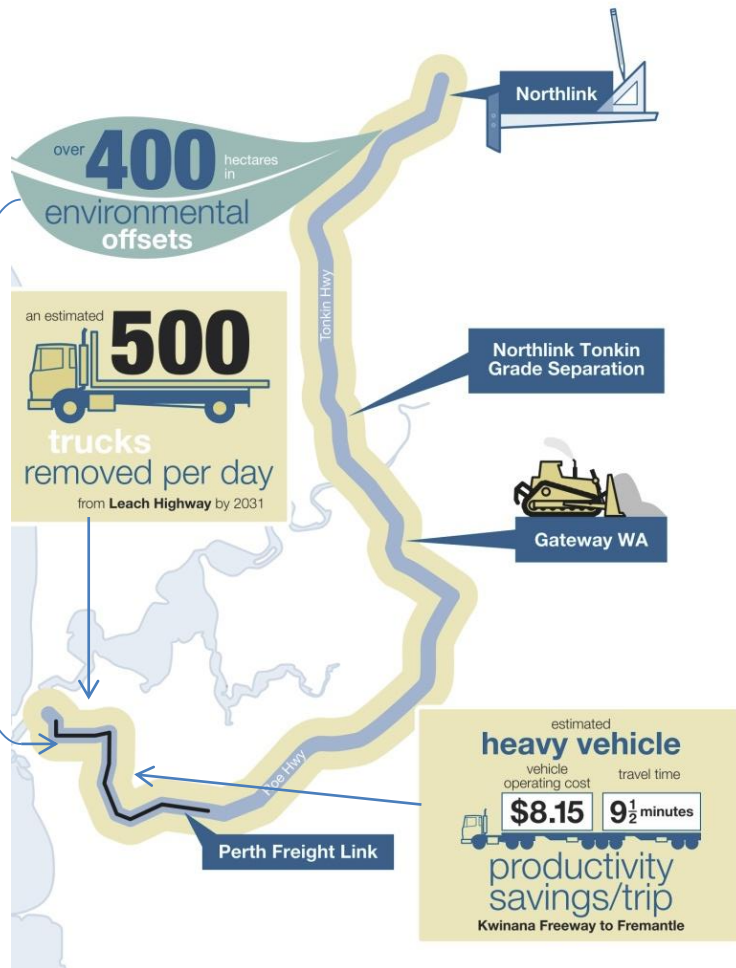
NorthLink - \$1.05 billion



Gateway WA - \$1 billion

Investing in freight infrastructure

Perth Freight Link



- Direct link between Roe Highway and Fremantle Port
- 13km corridor
- Servicing seven strategic centres
- Route-based charging
- Review of primary heavy vehicle corridors
- \$1.575 billion project
 - \$925m Commonwealth, \$650m State

Contracts

Main Roads has developed guidelines and templates for infrastructure procurement models.

Adoption of a model is based on **size, complexity** and **risk**.

Models used at Main Roads include:

- Alliance
- Early Contractor Involvement
- Design and Construct
- Construct Only (AS2124, Minor Works) – includes integrated management team



Contracts

Significant projects in progress for 2014/15:

- Gateway WA (Alliance)
- Kwinana Freeway Southbound widening – Roe Hwy to Armadale Rd (Design and Construct)
- Lloyd Street Rail Corridor Separation (Design and Construct)
- Great Eastern Highway – Bullabulling to Coolgardie (Design and Construct)
- Great Northern Highway – Bindi Bindi to Lyons (Construct only AS2124)
- North West Coastal Highway Widening - Milinya to Mia Mia (Construct only AS2124)

Projects to be awarded (tenders closed):

- Mitchell Freeway – Burns to Hester (Design and Construct)
- New Perth Stadium Swan River Pedestrian Bridge (Design and Construct)



Roads Australia Industry Luncheon

Reece Waldock
Director General - Transport



Department of
Transport



mainroads
WESTERN AUSTRALIA



Public Transport
Authority