

Key Work Health and Safety Statistics, Australia, 2015

2015



safe work australia

Disclaimer

The information provided in this document can only assist you in the most general way. This document does not replace any statutory requirements under any relevant jurisdictional legislation. Safe Work Australia is not liable for any loss resulting from any action taken or reliance made by you on the information or material contained in this document. Before relying on the material, users should carefully make their own assessment as to its accuracy, currency, completeness and relevance for their purposes, and should obtain any appropriate professional advice relevant to their particular circumstances. The views in this report should not be taken to represent the views of Safe Work Australia unless otherwise expressly stated.



Creative Commons

ISBN: 978-1-76028-178-6 (online pdf)

ISBN: 978-1-76028-179-3 (online docx)

With the exception of the Safe Work Australia logo, this report is licensed by Safe Work Australia under a Creative Commons 3.0 Australia licence.

To view a copy of this licence, visit

<http://creativecommons.org/licenses/by/3.0/au/deed.en>

In essence, you are free to copy, communicate and adapt the work as long as you attribute the work to Safe Work Australia and abide by the other licensing terms. The report should be attributed as Key Work Health and Safety Statistics, Australia, 2015.

Enquiries regarding the licence and use of the report are welcome at:

Copyright Officer

Stakeholder Engagement

Safe Work Australia

GPO Box 641 Canberra ACT 2601

Email: copyrightrequests@swa.gov.au

Contents

Summary	4
Summary of key statistics by sex	4
Work-related injuries and diseases	5
Serious workers' compensation claims	5
Trends in rates of serious claims, 2000–01 to 2012–13p.....	5
Serious claims by sex, 2012–13p.....	6
Serious claims: median time lost and median compensation paid, 2011–12.....	6
Serious claims by age group, 2012–13p.....	7
Rates of serious claims by jurisdiction, 2012–13p	8
Rates of serious claims by industry, 2012–13p.....	9
Rates of serious claims by occupation, 2012–13p.....	10
Percentage of serious claims by mechanism of injury or disease, 2012–13p.....	11
Percentage of serious claims by nature of injury or disease, 2012–13p.....	12
Percentage of serious claims by bodily location of injury or disease, 2012–13p	13
Work-Related Injuries Survey.....	14
Work-Related Injuries Survey: injuries and diseases by sex, 2013–14.....	14
Work-Related Injuries Survey: injuries and diseases by age group, 2013–14	15
Work-Related Injuries Survey: injuries and diseases by selected details, 2013–14	16
Work-related injury fatalities	17
Trend in the rate of injury fatalities, 2003 to 2013	17
Work-related injury fatalities by sex, 2013	18
Work-related injury fatalities by age group, 2013.....	18
Work-related injury fatalities by jurisdiction, 2013.....	19
Work-related injury fatalities by industry, 2013.....	20
Work-related injury fatalities by occupation, 2013.....	21
Percentage of work-related injury fatalities by mechanism of fatal injury, 2013.....	22
Costs of work-related injuries and diseases.....	23
Costs of work-related injuries and diseases, 2000–01, 2005–06 and 2008–09.....	23
Cost of work-related injuries and diseases by severity, 2008–09.....	23
Other statistics.....	24
Trends in occupational disease groups, 2000–01 to 2010–11	24
Number of new mesothelioma cases by sex, 1997 to 2011	25
Number of mesothelioma deaths by sex, 1997 to 2012.....	25
Further information	26

Summary

This booklet provides key statistics on work-related injuries, diseases and fatalities of workers in Australia.

Summary of key statistics by sex

	Male	Female	Total
Serious claims: number, percentage and rates, 2012–13p			
Number of serious claims	74 705	43 115	117 815
Percentage of serious claims	63%	37%	100%
Frequency rate (serious claims per million hours worked)	7.1	6.1	6.7
Incidence rate (serious claims per 1000 employees)	13.4	8.5	11.1
Serious claims: time lost and compensation paid, 2010–11			
Median time lost from work (weeks)	5.2	6.0	5.4
Median compensation paid	\$9 200	\$8 400	\$8 900
Work-Related Injuries Survey, 2013–14			
Number of injuries and diseases	323 700	208 100	531 800
Percentage of injuries and diseases	61%	39%	100%
Incidence rate (injuries and diseases per 1000 workers)	48.9	35.6	42.6
Work-related injury fatalities, 2013			
Number of fatalities	180	16	196
Percentage of fatalities	92%	8%	100%
Fatality rate (fatalities per 100 000 workers)	2.90	0.31	1.70

A serious claim is an accepted workers' compensation claim that involves one or more weeks away from work and excludes all fatalities, and all injuries and diseases experienced while travelling to or from work or while on a break away from the workplace. Preliminary data are denoted by 'p' and are subject to revision.

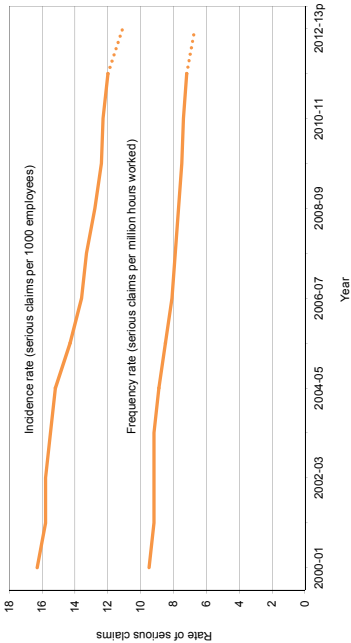
Work-related injuries and diseases

Serious workers' compensation claims

Safe Work Australia compiles national workers' compensation statistics using data obtained from jurisdictional workers' compensation authorities. These data are collated into the National Data Set for Compensation-Based Statistics, which is Safe Work Australia's primary source of information on compensated work-related injuries and diseases.

A serious claim is an accepted workers' compensation claim that involves one or more weeks away from work and excludes all fatalities, and all injuries and diseases experienced while travelling to or from work or while on a break away from the workplace. Preliminary data are denoted by 'p' and are subject to revision.

Trends in rates of serious claims, 2000–01 to 2012–13p



Source: Australian Workers' Compensation Statistics, 2012–13, Safe Work Australia.

Serious claims by sex, 2012–13p

Sex	Number of employees	Percentage of employees	Number of serious claims	Percentage of serious claims	Frequency rate (serious claims per million hours worked)	Incidence rate (serious claims per 1000 employees)
Male	5 555 000	52%	74 705	63%	7.1	13.4
Female	5 044 000	48%	43 115	37%	6.1	8.5
Total	10 599 000	100%	117 815	100%	6.7	11.1

Source: [Australian Workers' Compensation Statistics, 2012–13](#), Safe Work Australia.

Serious claims: median time lost and median compensation paid, 2011–12

Sex	Median time lost from work (weeks)	Median compensation paid
Male	5.2	\$9 200
Female	6.0	\$8 400
Total	5.4	\$8 900

Preliminary data are excluded from this table as claims from that year are likely to be open and accruing additional time lost and costs.
Source: [Australian Workers' Compensation Statistics, 2012–13](#), Safe Work Australia.

Serious claims by age group, 2012–13p

Age group (years)	Number of serious claims	Percentage of serious claims	Frequency rate (serious claims per million hours worked)	Incidence rate (serious claims per 1000 employees)
15–19	4 485	4%	6.8	6.4
20–24	10 995	9%	6.1	9.2
25–29	11 810	10%	5.1	9.1
30–34	11 300	10%	5.3	9.4
35–39	12 220	10%	6.1	10.8
40–44	14 730	13%	6.9	12.2
45–49	14 955	13%	7.4	13.4
50–54	15 480	13%	8.0	14.2
55–59	11 875	10%	8.1	14.0
60–64	7 515	6%	8.8	14.2
65 and above	2 430	2%	6.7	8.9
Total	117 815	100%	6.7	11.1

Source: [Australian Workers' Compensation Statistics, 2012–13](#), Safe Work Australia.

Rates of serious claims by jurisdiction, 2012–13p

Jurisdiction	Frequency rate (serious claims per million hours worked)	Incidence rate (serious claims per 1000 employees)
Tasmania	8.6	13.0
Queensland	8.2	13.9
South Australia	7.4	11.9
Seacare	7.4	32.1
Australian Capital Territory	7.3	11.7
New South Wales	6.9	11.7
Western Australia	6.1	10.6
Victoria	5.6	9.0
Northern Territory	5.2	9.4
Australian Government	3.4	6.2
Total	6.7	11.1

Source: [Comparative Performance Monitoring Report, 16th Edition](#), Safe Work Australia.

Rates of serious claims by industry, 2012–13p

Industry	Frequency rate (serious claims per million hours worked)	Incidence rate (serious claims per 1000 employees)
Agriculture, forestry & fishing	10.7	21.0
Transport, postal & warehousing	10.1	19.1
Health care & social assistance	9.9	14.1
Manufacturing	9.4	17.9
Construction	8.4	17.0
Public administration & safety	7.6	13.2
Administrative & support services	7.6	12.5
Accommodation & food services	7.2	8.9
Arts & recreation services	6.9	8.8
Wholesale trade	6.5	12.2
Other services	6.1	10.6
Retail trade	6.0	8.2
Mining	4.9	11.3
Education & training	4.7	7.2
Electricity, gas, water & waste services	4.4	8.6
Rental, hiring & real estate services	3.2	5.8
Information media & telecommunications	1.6	2.8
Professional, scientific & technical services	1.3	2.5
Financial & insurance services	1.1	2.1
Total	6.7	11.1

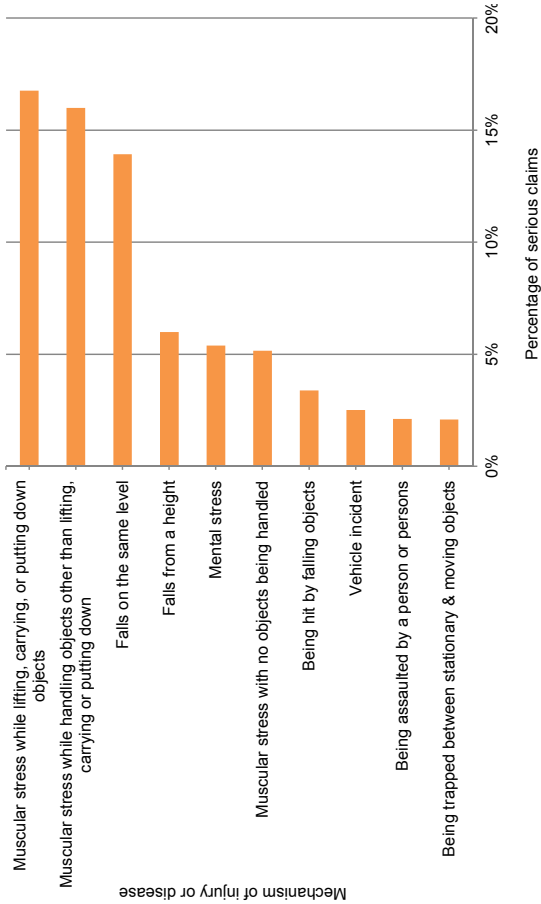
Source: [Australian Workers' Compensation Statistics, 2012–13](#), Safe Work Australia.

Rates of serious claims by occupation, 2012–13p

Occupation	Frequency rate (serious claims per million hours worked)	Incidence rate (serious claims per 1000 employees)
Labourers	18.7	27.0
Community & personal service workers	13.9	17.8
Machinery operators & drivers	12.3	24.4
Technicians & trades workers	8.0	15.4
Sales workers	4.8	6.0
Professionals	2.7	4.8
Clerical & administrative workers	2.5	4.0
Managers	2.0	4.3
Total	6.7	11.1

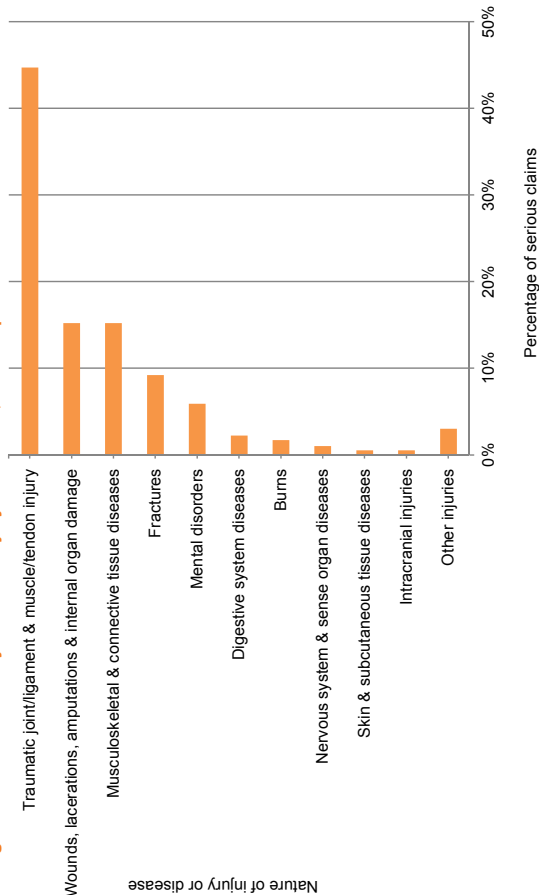
Source: [Australian Workers' Compensation Statistics, 2012–13](#), Safe Work Australia.

Percentage of serious claims by mechanism of injury or disease, 2012–13p



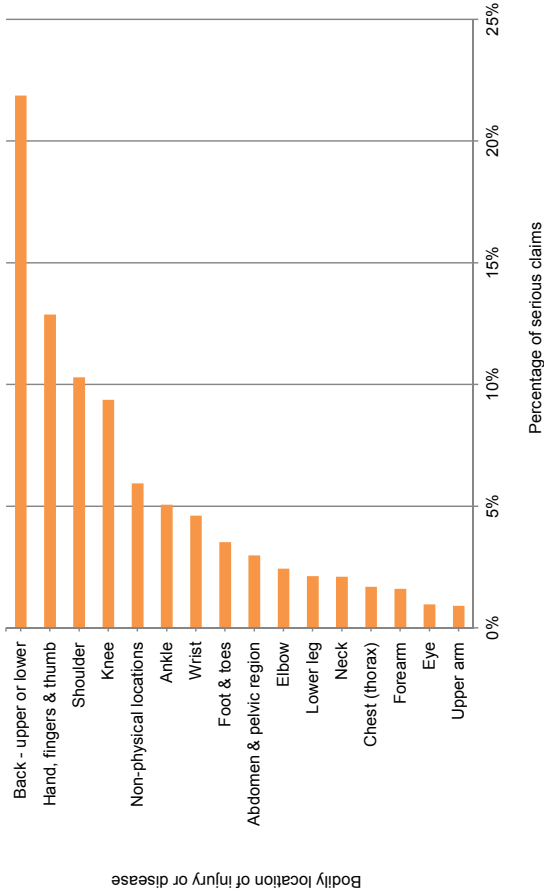
Source: [Australian Workers' Compensation Statistics, 2012–13](#), Safe Work Australia.

Percentage of serious claims by nature of injury or disease, 2012–13p



Source: [Australian Workers' Compensation Statistics, 2012–13](#), Safe Work Australia.

Percentage of serious claims by bodily location of injury or disease, 2012–13p



Source: [Australian Workers' Compensation Statistics, 2012–13](#), Safe Work Australia.

Work-Related Injuries Survey

In order to provide a more detailed account of work-related injuries and diseases, Safe Work Australia partially funded the Work-Related Injuries Survey, which sampled people aged 15 years and above who had engaged in work in the preceding 12 months. The survey was administered by the Australian Bureau of Statistics and the results were weighted to reflect the Australian population.

Work-Related Injuries Survey: injuries and diseases by sex, 2013–14

Sex	Number of workers	Percentage of workers	Workers who experienced an injury or disease	Percentage of injured and ill workers	Incidence rate (injuries and diseases per 1000 workers)
Male	6 625 400	53%	323 700	61%	48.9
Female	5 845 600	47%	208 100	39%	35.6
Total	12 471 000	100%	531 800	100%	42.6

Source: [Work-Related Injuries, 2013–14](#), Australian Bureau of Statistics.

Work-Related Injuries Survey: injuries and diseases by age group, 2013–14

Age group (years)	Number of workers	Percentage of workers	Workers who experienced an injury or disease	Percentage of injured and ill workers	Incidence rate (Injuries and diseases per 1000 workers)
15–19	757 100	6%	38 200	7%	50.4
20–24	1 289 400	10%	53 100	10%	41.1
25–29	1 456 900	12%	62 000	12%	42.6
30–34	1 431 400	11%	52 900	10%	37.0
35–39	1 283 900	10%	52 400	10%	40.8
40–44	1 387 600	11%	65 900	12%	47.5
45–49	1 295 600	10%	53 000	10%	40.9
50–54	1 284 200	10%	66 700	13%	51.9
55–59	1 067 400	9%	49 300	9%	46.2
60–64	713 000	6%	26 000	5%	36.4
65 and above	*504 400	4%	12 500	2%	*24.8
Total	12 471 000	100%	531 800	100%	42.6

Legend: *—estimate has a relative standard error of 25% to 50% and should be used with caution.

Source: [Work-Related Injuries, 2013–14](#), Australian Bureau of Statistics.

Work-Related Injuries Survey: injuries and diseases by selected details, 2013–14

Details of the most recent injury or disease	Percentage of the 531 800 injured and ill workers
Days or shifts absent from work	
None	39%
Part of a day or shift	7%
1–4 days	23%
5–10 days	12%
11 days or more	18%
Has not returned to work	*2%
Location where injury or disease occurred	
Workplace	91%
Travelling on business	4%
Travelling to or from work	2%
Lunchtime or break activities	*2%
Financial assistance	
Received financial assistance	61%
Did not receive any financial assistance	39%
Reporting of injury or disease	
Reported injury or disease to someone in the workplace	91%
Did not report injury or disease to someone in the workplace	9%

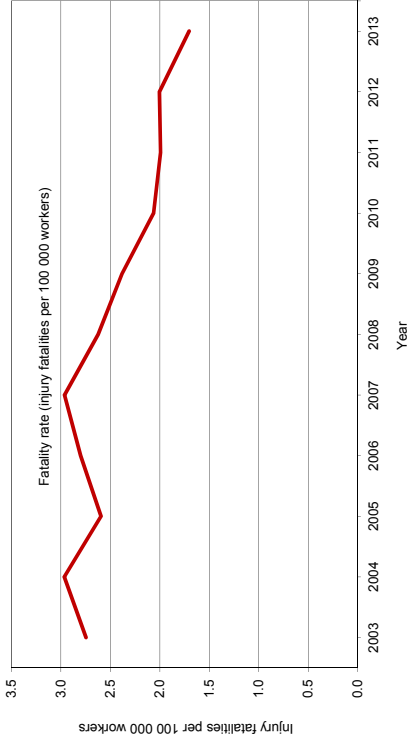
Legend: *—estimate has a relative standard error of 25% to 50% and should be used with caution.

Source: [Work-Related Injuries, 2013–14](#), Australian Bureau of Statistics.

Work-related injury fatalities

Safe Work Australia compiles national statistics on work-related injury fatalities, which are identified using workers' compensation data, fatality notifications from jurisdictions, the National Coronial Information System and the media. Work-related fatalities attributable to diseases, natural causes and suicides are excluded. Deaths of people undertaking criminal activity are also excluded. Further information is available in the [Work-Related Traumatic Injury Fatalities](#) reports (the data in this booklet may differ from the data in the reports due to revisions that have been made since the reports were published).

Trend in the rate of injury fatalities, 2003 to 2013



Source: Traumatic Injury Fatalities database, Safe Work Australia.

Work-related injury
fatalities

Work-related injury fatalities by sex, 2013

Sex	Number of fatalities	Percentage of fatalities	Fatality rate (fatalities per 100 000 workers)
Male	180	92%	2.90
Female	16	8%	0.31
Total	196	100%	1.70

Source: Traumatic Injury Fatalities database, Safe Work Australia.

Work-related injury fatalities by age group, 2013

Age group (years)	Number of fatalities	Percentage of fatalities	Fatality rate (fatalities per 100 000 workers)
15–24	18	9%	1.00
25–34	29	15%	1.10
35–44	36	18%	1.42
45–54	44	22%	1.79
55–64	36	18%	2.22
65 and above	33	17%	8.34
Total	196	100%	1.70

Source: Traumatic Injury Fatalities database, Safe Work Australia.

Work-related injury fatalities by jurisdiction, 2013

Jurisdiction	Number of fatalities	Percentage of fatalities	Fatality rate (fatalities per 100 000 workers)
Tasmania	8	4%	3.45
Northern Territory	4	2%	3.18
Western Australia	33	17%	2.49
Queensland	50	26%	2.17
South Australia	15	8%	1.86
New South Wales	54	28%	1.51
Victoria	31	16%	1.09
Australian Capital Territory	1	1%	0.47
Total	196	100%	1.70

Source: Traumatic Injury Fatalities database, Safe Work Australia.

Work-related injury fatalities by industry, 2013

Industry	Number of fatalities	Percentage of fatalities	Fatality rate (fatalities per 100 000 workers)
Agriculture, forestry & fishing	49	25%	16.33
Transport, postal & warehousing	45	23%	7.59
Arts & recreation services	7	4%	3.37
Mining	8	4%	3.00
Electricity, gas, water & waste services	4	2%	2.72
Construction	22	11%	2.18
Wholesale trade	7	4%	1.66
Rental, hiring & real estate services	3	2%	1.55
Other services	7	4%	1.52
Public administration & safety	11	6%	1.37
Manufacturing	12	6%	1.30
Administrative & support services	5	3%	1.29
Retail trade	8	4%	0.66
Health care & social assistance	4	2%	0.29
Accommodation & food services	2	1%	0.26
Professional, scientific & technical services	2	1%	0.22
Total	196	100%	1.70

Source: Traumatic Injury Fatalities database, Safe Work Australia.

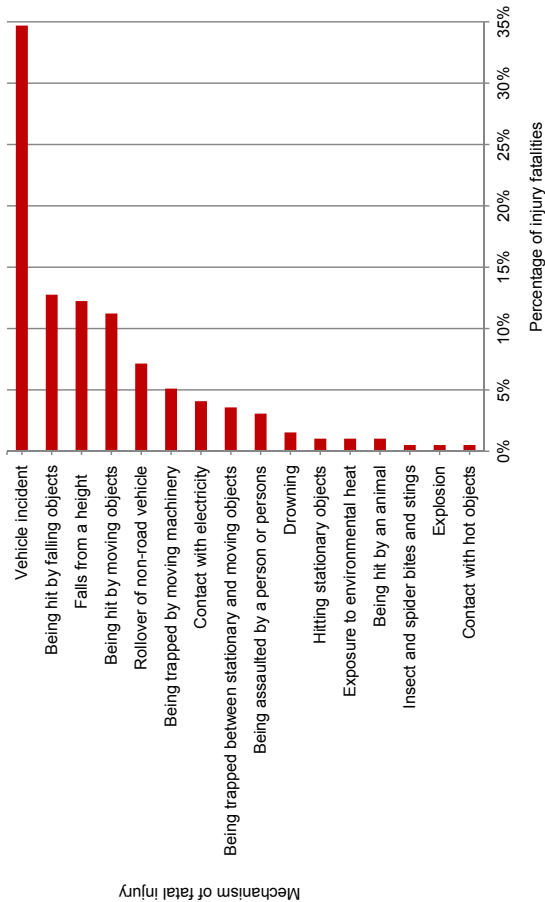
Work-related injury fatalities by occupation, 2013

Occupation	Number of fatalities	Percentage of fatalities	Fatality rate (fatalities per 100 000 workers)
Machinery operators & drivers	63	32%	8.12
Labourers	40	20%	3.55
Managers	29	15%	1.99
Technicians & trades workers	28	14%	1.68
Community & personal service workers	14	7%	1.23
Sales workers	6	3%	0.56
Professionals	12	6%	0.47
Clerical & administrative workers	1	1%	0.06
Unknown	3	2%	NA
Total	196	100%	1.70

Legend: NA—rate is incalculable due to the absence of an appropriate denominator.

Source: Traumatic Injury Fatalities database, Safe Work Australia.

Percentage of work-related injury fatalities by mechanism of fatal injury, 2013



Source: Traumatic Injury Fatalities database, Safe Work Australia.

Costs of work-related injuries and diseases

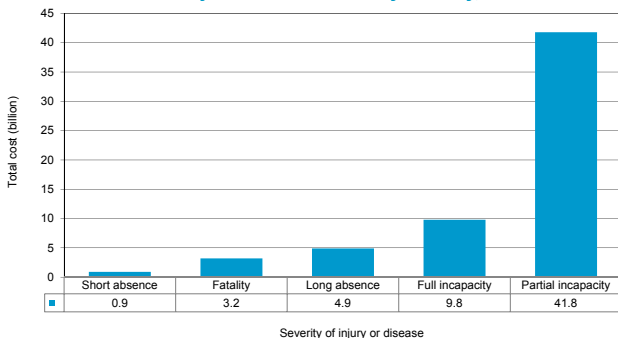
The cost estimates presented below include direct costs (payment of wages and medical costs) and indirect costs (lost productivity, loss of future earnings and social welfare payments).

Costs of work-related injuries and diseases, 2000–01, 2005–06 and 2008–09

	2000-01	2005-06	2008-09
Total estimated cost	\$34.3 billion	\$57.5 billion	\$60.6 billion
Estimated cost as a percentage of GDP	5.00%	5.90%	4.80%
Percentage of cost borne by workers	44%	49%	74%
Percentage of cost borne by community	53%	47%	21%
Percentage of cost borne by employers	3%	4%	5%

Source: [The Cost of Work-Related Injury and Illness for Australian Employers, Workers and the Community, 2008–09](#), Safe Work Australia.

Cost of work-related injuries and diseases by severity, 2008–09



Source: [The Cost of Work-Related Injury and Illness for Australian Employers, Workers and the Community, 2008–09](#), Safe Work Australia.

Other statistics

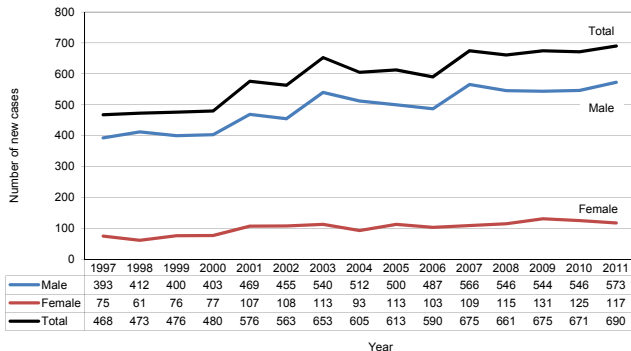
Trends in occupational disease groups, 2000–01 to 2010–11

Disease group	Trend between 2000–01 and 2010–11	Basis of trend
Musculoskeletal disorders	↓	NDS data
Mental disorders	→	NDS data
Noise-induced hearing loss	→	NDS data
Infectious and parasitic diseases	↓	NDS and NNDSS data
Respiratory diseases	↓	NDS and NHMD data
Contact dermatitis	↓	NDS data
Cardiovascular diseases	↓	NDS data
Occupational cancers	→	NDS, DDB and ACIM data

Legend: ↓—disease group displayed a decreasing trend; →—disease group did not display a clear overall trend of increase or decrease; NDS—National Data Set for Compensation-Based Statistics; NNDSS—National Notifiable Disease Surveillance System; NHMD—National Hospital Morbidity Database; DDB—New South Wales Dust Diseases Board; ACIM—Australian Cancer Incidence and Mortality books.

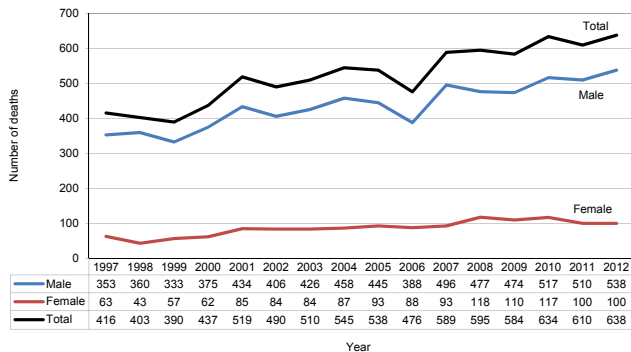
Source: [Occupational Disease Indicators, 2014](#), Safe Work Australia.

Number of new mesothelioma¹ cases by sex, 1997 to 2011



Source: [Mesothelioma in Australia: Incidence \(1982 to 2013\) and Mortality \(1997 to 2012\)](#), Safe Work Australia.

Number of mesothelioma deaths by sex, 1997 to 2012



Source: [Mesothelioma in Australia: Incidence \(1982 to 2013\) and Mortality \(1997 to 2012\)](#), Safe Work Australia.

1—Mesothelioma is a fatal cancer that typically occurs 20 to 40 years after exposure to asbestos, although exposure does not always result in the disease. The disease is strongly linked to occupational exposure to asbestos.

Further information

Type of data	Further information
Serious workers' compensation claims	<u>Australian Workers' Compensation Statistics, 2012–13</u>
Serious workers' compensation claims by jurisdiction	<u>Comparative Performance Monitoring Report, 16th Edition</u>
Work-Related Injuries Survey	<u>Work-Related Injuries, 2013–14</u>
Work-related injury fatalities	<u>Work-Related Traumatic Injury Fatalities</u>
Costs of work-related injuries and diseases	<u>The Cost of Work-Related Injury and Illness for Australian Employers, Workers and the Community, 2008–09</u>
Trends in occupational disease groups	<u>Occupational Disease Indicators, 2014</u>
Mesothelioma cases and deaths	<u>Mesothelioma in Australia: Incidence (1982 to 2013) and Mortality (1997 to 2012)</u>

Safe Work Australia

GPO Box 641

Canberra ACT 2601

Email: info@swa.gov.au



safe work australia